



"A caring,  
learning  
community"

We promote mutual respect in a safe  
and happy school where the fulfilment  
of each individual's potential is our  
goal.



# PROSPECTUS

## CARE AND SUPPORT





## Welcome from Senior Management

*On behalf of the school community we would like to extend a warm welcome to you and your son/daughter as you embark on the journey through second level education. Deelee College is a co-educational, non-denominational school under the patronage of Donegal ETB. Since its establishment in 1964, Deelee College has provided a wide range of educational opportunities in the community. Over the years it has had to adapt to the many changes in education. We are open to adapting our methods of delivery to suit the needs of our learners. As a staff we are working towards the new Junior Cycle with enthusiasm. Teaching is carried out with dedication and diligence thus providing students with the skills needed to reach their full potential.*

*At Deelee College mutual respect is a core value that all members of the college community strive for on a daily basis. In our determination to deliver this environment, the students, staff and parents work hand in hand to encourage a student centred environment where all scholars will have the opportunity to flourish. Top quality teaching and a positive learning setting provides a solid base for all students to receive the essential life-skills to take on any challenge placed before them as they embark on their education and life expeditions.*

*The growth of the whole person is a fundamental concept of our college, a strong Student Support team, dedicated teachers and willing learners who are supported by a buoyant family network allows for "a caring learning community". Individually students will be stimulated to flourish, progress and be nurtured throughout their participation in curricular and extra curricular activities in Deelee College. This helps fulfil their potential by setting challenging goals and achievable outcomes. The dynamic of our school has changed dramatically since the building of our new, modern and expansive extension opening. Within the extension we now have state of the art specialist rooms: home economics, art, DCG, science and multi-media. In addition to these we have thirteen new general-purpose classrooms. The upgrade and development of the existing school offers a modern facility that is the envy of many school communities. The completed building works offer our students a state of the art learning environment. It will allow for the college to expand its horizons through the latest teaching methodologies. It offers an inclusive, comfortable and motivational learning environment to our student body as they embark on their respective programmes of learning as Junior and Senior students.*

*We welcome you to browse through our prospectus. It offers you a glimpse of the daily life in Deelee College. If you have any further questions please do not hesitate to contact us.*



**Best Regards,**

Mr. Joe Boyle

**Mr. Joe Boyle**  
**Principal**

Ms. Carmel Mulligan

**Ms. Carmel Mulligan**  
**Deputy Principal**

Mr. Shane Mc Art

**Mr. Shane Mc Art**  
**Deputy Principal**

# Student Leadership Team



*Student Leadership Team pictured with our Deputy Principal (Ms. Carmel Mulligan) and our Principal (Mr. Joe Boyle) Above: left to right, Deputy Head Girl (Tara Toye), Head Girl (Áine Marie McBride), Head Boy (Óisín Toye) and Deputy Head Boy (Jude McCrossan).*



## Senior Leadership team 2021/2022

### About the Student Leadership Programme

The Student Leadership Programme is aimed at enabling the development of young autonomous adults. The programme involves teachers nominating a Head Boy, Head Girl and a team of Prefects who then go on to have a leadership role within the college. Student leaders receive formal training to carry out their role. Through the course of the year our young leaders grow in confidence and develop communication, organisational and interpersonal skills. Being a member of our Student Leadership Team is a major accomplishment and something all students should aspire to.



## General Information

### School Day

#### 1st, 2nd, 4th (TY) Year

Class 1 09.00 - 09.40

Class 2 09.40 - 10.20

**Break** 10.20 - 10.35

Class 3 10.35 - 11.15

Class 4 11.15 - 11.55

Class 5 11.55 - 12.35

**Lunch** 12.35 - 13.15

Class 6 13.15 - 14.00

Class 7 14.00 - 14.40

Class 8 14.40 - 15.20

Class 9 15.20 - 16.00

#### 3rd, 5th & 6th Year

Class 1 09.00 - 09.40

Class 2 09.40 - 10.20

Class 3 10.20 - 11.00

**Break** 11.00 - 11.15

Class 4 11.15 - 11.55

Class 5 11.55 - 12.35

Class 6 12.35 - 13.15

**Lunch** 13.15 - 14.00

Class 7 14.00 - 14.40

Class 8 14.40 - 15.20

Class 9 15.20 - 16.00

**SCHOOL FINISHES AT 1.15 ON A FRIDAY**

### Year Heads

1st Year - Ms. O Hogg

2nd Year - Ms. T Friel

3rd Year - Ms S Hegarty

4th Year - Mrs. M Gibbons

5th Year - Ms F Friel

6th Year - Mr. P Flood

### Programmes Co-ordinators

#### **Transition Year**

*Mrs. Mary Gibbons*

#### **JCSP -**

*Ms. Fiona Henderson*

#### **Leaving Certificate Applied**

*Ms. Jackie Pearson*

#### **SEN Co-ordinator**

*Ms. Marisa Simms*

### Uniform

#### **Boys:**

- Grey trousers
- Grey shirt
- Navy v-neck jumper (with crest)
- Black shoes
- School coat

#### **Girls:**

- Grey trousers or skirt
- Grey soft collar blouse
- Navy v-neck jumper (with crest)
- Black shoes
- School coat

### PE Uniform

- 1/4 zip top
- Crew neck jumper (with crest)
- Round neck t-shirt (with crest)
- Polo t-shirt (with crest)
- Navy tracksuit bottoms (with crest)
- Navy leggings

- Sports hall
- GAA field
- Soccer field
- All weather pitch
- Fitness suite
- Dressing rooms with Shower facilities
- Canteen
- Music room

### Facilities

- Woodwork rooms
- Metalwork room
- 2 Home economics kitchens
- 3 Fully equipped science labs
- 3 Modern computer suites
- 3 Safe Base Classrooms
- Art Room

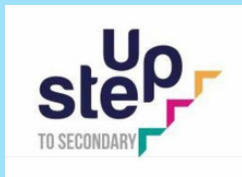


## The School Curriculum

Deele College provides a comprehensive range of programmes and subjects at Junior and Senior Cycle. As an ETB school we have a very broad range of subjects on offer, thereby expanding the range of career opportunities available to our students. Students have equal access to the full range of academic, business, scientific and technical subjects which are on offer.

### First Year Induction

The transition from Primary school to Post Primary school can be challenging for many students and the Deele College induction programme aims to address some of the key issues such as:



- Making new friends
- Dealing with a timetable
- Increased homework levels
- Negotiating the school building
- How to manage relationships with older students.



*The programme runs for the first four days of the school year.*

- This week is designed around familiarising students with the school building, their teachers and their timetable.
- The students take part in a number of team work activities to help develop positive relationships with the other students in their class.
- This week focuses on helping students adjust to the increased levels of homework at Post Primary school.
- Teachers focus on supporting students in the use of their homework journal and managing homework with an increased number of subjects.



## The Junior Cycle Programme

The new Junior Cycle places the student at the centre of the learning process. It will allow for new ways to learn and offer a broader range of skills to be assessed.

### Purpose of Education in Junior Cycle:

- Help students become better learners & develop a love of learning
- Provide a solid foundation for further study
- To develop skills for learning and life
- To support learning through improved reporting to both students and parents

There are eight key skills that underpin the framework for Junior Cycle. These will inform teacher planning, as well as the development and implementation of, junior cycle programmes in school. These key skills will permeate across the entire curriculum.



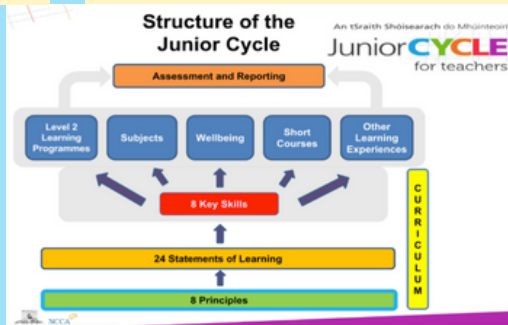
An tSraith Shóisearach do Mhúinteoirí  
**JuniorCYCLE**  
for teachers

From 2017, Junior Cycle students have received a new Junior Cycle Profile of Achievement (JCPA). The JCPA now reflects a much wider range of your child's learning over the three years of junior cycle.

### What does the JCPA report on?

The areas that will now be reported on are:

- Subjects
- Classroom Based Assessments
- Short courses
- Other Learning Experiences



**All 1st Year students will study the following subjects:**

***Irish, English, Mathematics, History, Geography, Science, Spanish, Physical Education, Wellbeing, Religious Education, Social, Personal and Health Education (SPHE), Civic, Social and Political Education (CSPE).***

***In addition each 1st year student will study 3 subjects from the list below.***

***Visual Art, Home Economics, Wood Technology, Engineering, Graphics, Music, Business Studies***

### Subjects

Students can study a maximum of 10 subjects or 9 subjects and 2 short courses or 8 subjects and 4 short courses. Short courses will depend on the school. The traditional A, B, C grade system no longer will exist. The new descriptors that are used are:

**Distinction 90 to 100%**

**Higher Merit 75 to 89 %**

**Merit 55 to 74 %**

**Achieved 40 to 54 %**

**Partially Achieved 20 to 39 %**

**Not graded 0 to 19%**

At the end of third year, students will sit the final SEC examination in June.

### Classroom Based Assessment

These will provide students with the opportunities to demonstrate their learning and skills in a way that pen and paper does not allow. These will be facilitated by the subject teacher during a defined time period within normal class contact time and to a national timetable.

Students will complete one CBA in second year and another in third year. CBAs will be reported on the JCPA using the following descriptors:

- Exceptional
- Above Expectations
- In Line with Expectations
- Yet to meet Expectations

### Assessment Task

*This will be completed after the second CBA in third year. This task will be set by the National Council for Curriculum & Assessment (NCCA). It will be undertaken during normal class time and is then sent to the State Examination Commission (SEC) for marking. The Assessment Task is worth 10% of the overall grade in the case of most subjects.*

### **Junior Certificate Profile of Achievement (JCPA)**

### Other Learning Experiences

*Students will have the opportunity to engage with a range of other learning experiences as part of their Junior Cycle Programme and these can be recorded on the JCPA. These learning experiences can include engagement in a science competition, a musical performance or taking part in a sports team or similar.*

### Shorts Courses

*Schools may offer short courses such as Coding, Digital Media Literacy, Physical Education and CSPE. Schools may develop their own short courses to meet the students' needs.*



Alicia Gallagher 1B



Jay Patterson 1F



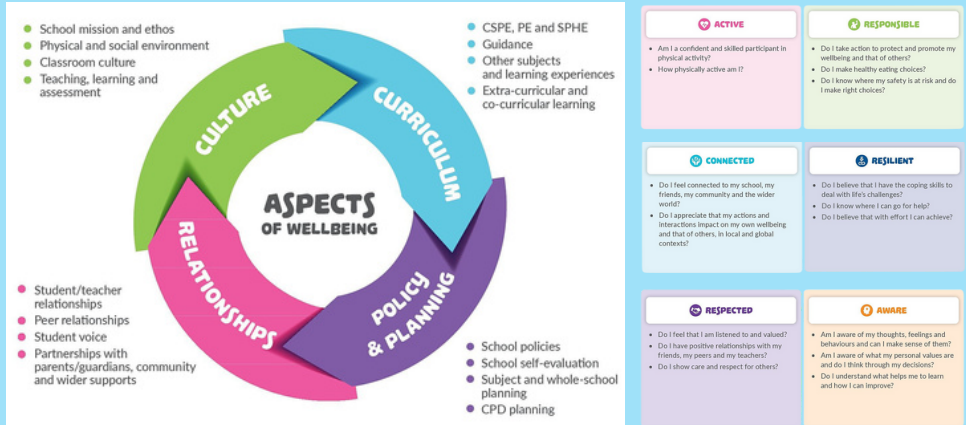
Callie Kilpatrick 1B

### **1st Year Students Art Work**



## Wellbeing within the Junior Cycle

The wellbeing of each child is of central importance to his/her educational success and overall happiness. As a result Wellbeing will become a core part of each student's Junior Cycle experience. Wellbeing will include learning areas such as Physical Education, Civic, Social and Political Education, Social, Personal and Health Education (including Relations and Sexuality Education) and Guidance.



## Level 2 Learning Programmes

There is a new Junior Cycle Pathway for students with particular additional educational needs called Level 2 Learning Programmes (L2LPs). These are successfully taking place in specialist schools and are available for some students in mainstream post-primary schools also. Students completing this programme will have their results reported on the JCPA.



Senior Students attending the Open Day at LYIT

## The Junior Certificate Schools Programme

The JCSP is a national programme sponsored by the Department of Education and Skills (DES) and the National Council for Curriculum and Assessment (NCCA). It is based on the concept that all young people are capable of achieving real success in school and that they can have a positive experience of education, if the conditions are favourable. The JCSP provides students with an opportunity for success in school and reward that success with an official record of their achievements, validated by the DES. All students who are part of the JCSP must sit the Junior Certificate like their peers. There are many advantages to being part of the JCSP in Deelee College.

Students enjoy a broad curriculum which includes outdoor education and sports, active learning and creative arts. Students take part in many learning initiatives which improve their literacy and numeracy skills. They are given the opportunity to support other students' learning, by working with local primary school children.

The JCSP programme has worked extremely well in Deelee College throughout the years ensuring that all students feel valued and achieve their potential in all areas.



**Ms. F Henderson**  
**JCSP**  
**Co Ordinator**



**"Make A Book"**





## 4th Year - Transition Year

The Transition Year is an optional one year educational programme for students who have completed the Junior Certificate. It offers students a wide range of learning experiences aimed at contributing to personal development, social awareness and work-related learning.

The Transition Year Programme promotes the personal, social, vocational and educational development of students and prepares them for their role as autonomous, participative and responsible members of society.

It helps pupils make the transition from Junior Cycle to Senior Cycle as effectively as possible. The programme is currently structured as follows:



*Mrs. M Gibbons*  
**TY Co-ordinator**

<b>Irish</b>	<b>Coding</b>	<b>Music</b>
<b>English</b>	<b>Religion</b>	<b>DCG</b>
<b>Maths</b>	<b>Vocational Preperation</b>	<b>Drama</b>
<b>Spanish</b>	<b>Food Science</b>	<b>SPHE</b>
<b>Home Economics</b>	<b>Construction</b>	<b>Engineering</b>
<b>PE</b>	<b>Wellbeing</b>	<b>Physics</b>
<b>ICT</b>	<b>Peace IV</b>	<b>Chemistry</b>
<b>Career Guidance</b>	<b>Enterprise</b>	<b>Ag Science</b>
<b>History</b>	<b>Learning To Learn</b>	<b>Biology</b>



A focus on careers during the year helps students to investigate their future and determine the goals needed to secure their future. Students go on work experience one day per week throughout the year to give them an insight into the world of work. The students follow the Microsoft Office Specialist (MOS) and Safe Food programmes. Guest speakers and activities are arranged during the year including outdoor pursuits, Gaisce Awards, BT Young Scientist Exhibition, Junk Kouture, Build A Bank Challenge, First Aid, Craft Fair, Coaching Courses, Song School and mentoring by Donegal Enterprise Board.

The Transition Year Programme in Deelee College uses a wide range of teaching and learning methodologies which give the students the opportunity to develop maturity and self-confidence. They get to try out different areas of study before finally choosing option subjects for the Leaving Certificate.

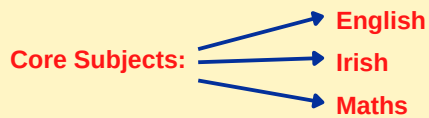


## 5th and 6th Years - Senior Cycle Programmes



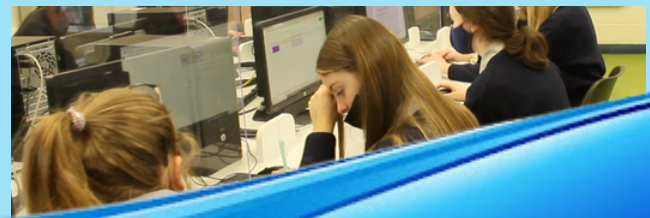
### Leaving Certificate:

Students can follow numerous subject areas through the traditional Leaving Certificate to examination level. It is structured as follows:



In addition leaving certs select four of the following also to examination level:

- History
- Geography
- Business
- Physics
- Chemistry
- Biology
- Spanish
- Art
- Music
- Construction
- Engineering
- Leaving Cert PE
- Agriculture Science
- Computer Science
- Home Economics
- Design Communication Graphics





# Leaving Certificate Vocational Programme (LCVP)

Deele College also provides students with the option of availing of an enhanced version of the existing Leaving Certificate known as the Leaving Certificate Vocational Programme (LCVP) which establishes links between school and society through modules on preparation for Work and Enterprise Education. This allows them to add modules on Preparation for Work and Enterprise Education to their Leaving Certificate subjects.

**LCVP**



**HARD WORK IS A TWO WAY  
STREET  
YOU GET BACK  
EXACTLY WHAT YOU PUT IN**

*Photographs of a very  
successful soccer  
blitz organised  
by the  
LCVP  
class*



## Leaving Certificate Applied Programme (LCA)

The Leaving Certificate Applied is a distinct, self contained two year programme aimed at preparing students for adult and working life. The programme has a strong vocational dimension which equips students with skills for the world of work. The two year programme consists of four half year blocks called sessions. Students' achievements are accredited in each of these sessions which form part of their final award. Each course consists of a number of tasks or projects over the two years which they also gain credits for. Work experience is an important part of the Leaving Certificate Applied programme and is carried out on Wednesday of each week. The programme is structured as follows:



**Ms. J Pearson**  
**LCA Coordinator**

### Subjects To be Taken

- |                                |                                 |
|--------------------------------|---------------------------------|
| - English and Communications   | - Religious Education           |
| - Information Technology (ICT) | - Spanish (Year 2)              |
| - Social Education             | - Agricultural Science (Year 1) |
| - Vocational Preparation       | - Hotel, Catering & Tourism     |
| - Arts Education (Year 1)      | - Leisure & Recreation          |
| - Mathematical Applications    | - Irish (Year 1)                |
| - Graphics and Construction    | - Art, Craft & Design           |

### Individual Tasks To be Taken

- |                         |                       |
|-------------------------|-----------------------|
| - Practical Achievement | - Personal Reflection |
|-------------------------|-----------------------|

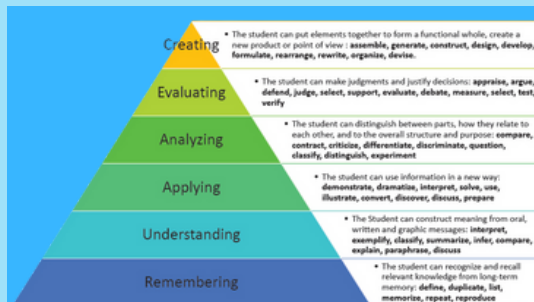


# Instructional Leadership

Deele College is a participant in the Instructional Leadership Programme, initiated in the post primary sector in Ireland by the ETBI.

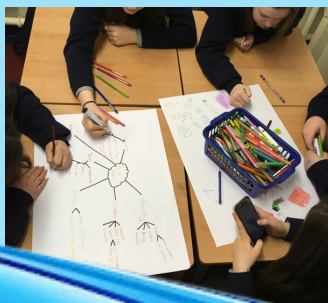
Instructional Leadership strategies place an emphasis on group work and cooperative learning. It aims to create a positive learning environment through the use of numerous strategies, skills and tactics such as:

- think-pair-share,
- mind maps,
- graphic organisers
- And many more



Cross curricular learning is encouraged and the critical skills of independent learning and problem solving are encouraged. It focuses on the link between school self-evaluation and school improvement and primarily focuses on an action plan to enhance teaching and learning.

It is envisaged that these instructional methods, skills and tactics will eventually become common place in the repertoire of all professional teachers. It is expected that these teaching methods will help to make the learning experience a more enjoyable and successful one for our students.



Are you fully charged?



### Guidance Counselling

Guidance Counselling is a key part of the School Guidance Programme, offered as part of a developmental learning process. The programme aims to meet the needs of students along a continuum from a whole school approach to group and individualised approaches. Counselling may include personal, educational and career counselling or a combination of these. The learning areas include:



**Mrs. G Brady & Ms. F Friel**  
**Career Guidance Counsellors**

<b>Developing Myself</b>	<ul style="list-style-type: none"> <li>- Developing &amp; maintaining self-esteem &amp; a positive self-concept</li> <li>- Interacting effectively with others (face-to-face and online)</li> <li>- Developing and growing throughout life</li> </ul>
<b>Developing My Learning</b>	<ul style="list-style-type: none"> <li>- Employing effective personal learning/exam strategies</li> <li>- Making educational choices in line with career aspirations</li> </ul>
<b>Developing My Career Path</b>	<ul style="list-style-type: none"> <li>- Using career related information and sources appropriately</li> <li>- Understanding the world of work and life roles</li> <li>- Managing career development and decision making</li> </ul>

In exploring these areas of learning students partake in the following activities:

- Vocational interviews
- Attendance at career events
- Visits to Universities and Colleges
- Talks: Subject choice, Going to college, CAO, UCAS, Apprenticeships, Further Education
- Mentoring
- Talks from Guest speakers
- Psychometric Testing

### School Completion Programme (SCP)

The School Completion Programme is part of the education welfare service provided by Tusla in partnership with the HSLC and the EWO services. The SCP aims to have a significant positive impact on levels of pupil retention in primary and post-primary schools and on the number of pupils who successfully complete the Senior Cycle. The main aims of the School Completion Programme are:

- To retain young people in the formal education system to completion of the Senior Cycle, or equivalent.
- To improve the quality of participation and educational attainment of targeted children and young people in the educational process.
- To bring together all relevant local stakeholders (home, school, youth, community, statutory and voluntary) to tackle early school leaving.
- To offer positive supports in primary and post-primary schools towards the prevention of educational disadvantage.
- To encourage young people who have left mainstream education to return to school.

**Ms. S Boyle**  
**SCP Co-ordinator**



## Behaviour For Learning

The Behaviour For Learning classroom offers three layers of behaviour support to post primary schools:

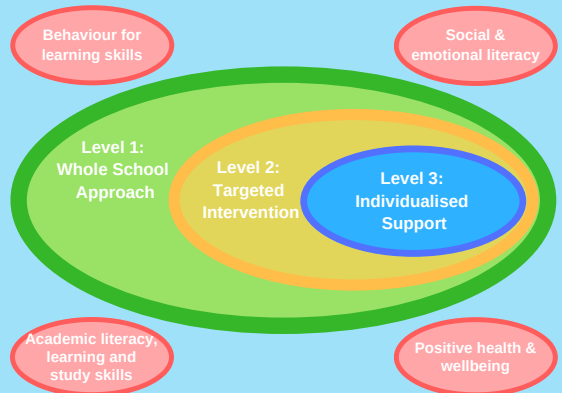
- Level 1: Whole School Support
- Level 2: Targeted Intervention Support
- Level 3: Intensive Individualised Support

This three tiered approach endeavours to address the behavioural, social, emotional, academic literacy and learning needs of students. All three levels are customised to the specific needs and requirements of each school. All work undertaken aims to promote positive behaviour and learning throughout the school by focusing on:

- Behaviour for learning skills
- Social and emotional literacy
- Academic literacy, learning and study skills
- Positive health and wellbeing skills



**Ms. C Bonner**  
**Behaviour For Learning**  
**Teacher**



## Safe Base Classrooms

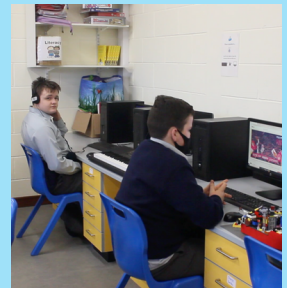
At Deelee College we have three specialised "Safe Based Classrooms".

- 1 Senior Classroom
- 2 Junior Classrooms

Within each room there is the following:

- One Teaching Co Ordinator
- Two Special Needs Assistants

These classrooms comply with the Department of Education's regulations in relation to provision and allocation, with the maximum number of students that can be assigned to each safe Based Classroom is 6.



## Communications between school and home

- Each student is allocated a Class Tutor for each of his/her years at Deelee College. As well as monitoring attendance and behaviour, the Class Tutor takes a pastoral interest in each student's welfare. It is vital that parents/guardians would convey any relevant information to the Class Tutor.
- Formal meetings between parents/guardians and teachers takes place annually. These give teachers and parents/guardians the opportunity to meet to review each students overall progress in the school
- The School Principal, Mr. Boyle and the Deputy Principals, Ms. Mulligan and Mr. Mc Art, are available to meet parents/guardians on an appointment basis throughout the year.
- Deelee College is moving forward with technology, so much of the information will be transmitted electronically through email and text. All payments eg: book rental/Exam Fee/ School Trips can be made through "Way 2 Pay". This is an online payment system. A link will be sent by text to the parent's phone for each payment.
- A Comprehensive computerised school report is issued in respect of each student twice yearly. Each parent can access their child's school term report online through the school website- [www.deeleecollege.ie/vsware](http://www.deeleecollege.ie/vsware) using the unique username and password issued by the school.

### Attendance

- A tracking secretary tracks the attendance of each student within Deelee College. If a student appears to be absent at registration and has not signed in late, a text will be sent to the parent that morning requesting contact be made to the school with a valid reason for the absence. An absent note or preferably a medical cert must be presented to the school to cover absent days.
- Attendance is continually monitored. It is school policy that a letter be sent home to parents of students who miss between 5-10 days, 11-15 days and 16-20 days. If a student misses more than 20 days the school must report the student to TUSLA. An Educational Welfare Officer (EWO) will request a home visit or arrange a meeting with the parents for an explanation of all absences.
- An absent note or preferably a medical cert must be presented to the school to cover absent days.
- Attendance incentives are run within the school to help improve attendance rate (book vouchers / cinema trips / trips to Ireland soccer games, pizza parties).
- Attendance improves with parent or Guardian's participation. Poor attendance can influence your child's academic performance. Every school day counts.



**MAKE EVERY DAY COUNT**



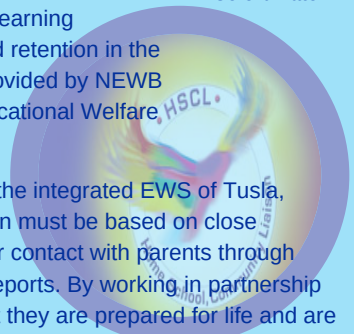
## Home School Community Liaison (HSCL)

The Home School Community Liaison (HSCL) Scheme is a central component of the Department of Education and Skills DEIS Programme (Delivering Equality of Opportunity in Schools), an Action Plan for Educational Inclusion, which aims to combat educational disadvantage, through a range of interventions and strategies, designed to improve educational outcomes for children. The underlying vision of the HSCL Scheme is preventative; therefore, it seeks to promote and develop real partnership between parents, teachers and communities, in order to enhance pupils' outcomes and learning opportunities, through improved attendance, participation and retention in the education system. Responsibility for the services formerly provided by NEWB (National Educational Welfare Board) now rests with the Educational Welfare Services (EWS) of Tusla, the Child and Family Agency.



**Ms. P Gallagher**  
**HSCL**  
**Co ordinator**

This includes the HSCL Scheme, which is a core element of the integrated EWS of Tusla, serving DEIS schools. We believe very strongly that education must be based on close co-operation between parents and teachers. We have regular contact with parents through information evenings, parent-teacher meetings, and school reports. By working in partnership we are ensuring that students reach their full potential so that they are prepared for life and are able to take their place in society.



## Restorative Practice

**Restorative Practice Questions ?**

- What happened?
- What were you thinking at the time?
- What have been your thoughts since the incident?
- Who has been affected by your actions?
- What do you need to do now to make things right?

This project is supported by the European Union's PEACE IV Programme managed for the Special EU Programmes Body by Donegal County Council.

**Students reflect on the impact of their behaviour on other people**

**Students learning about Restorative Practice**

**Restorative Practice Posters around our school**

**Co-operation for a better school community**

This project is supported by the European Union's PEACE IV Programme managed for the Special EU Programmes Body by Donegal County Council.

Logos: Donegal County Council, Peace, LCDC, eth.



**RESTORATIVE PRACTICE**

**Restorative Practice involves building positive relationships between our students & teachers.**

**Circle Time**

**An opportunity for students & teachers to talk about topics or issues, in an open, honest & fair environment.**

**Better flow of communication between students & teachers**

Posters by our students →

**Fair Process - Each person is listened to & respected**

## Our Additional Educational Needs Team

The AEN team consists of a team of teachers and SNA,s who work with students that require extra support to help them reach their full potential while in Deelee College.

Different forms of support are put in place to help these students overcome their difficulties. Some examples are:

- *Small group tuition*
- *Team teaching*
- *Co-operative teaching*
- *Laptops with specific software*
- *C-pens to aid reading*



*Ms.M. Simms  
SEN  
Co-ordinator*

The AEN team meet once a week to discuss students' progress and any difficulties they might be experiencing in school.

Applications are made by the SENCO to the State Examinations Commission (SEC) for Reasonable Accommodations in Certificate Examinations. (RACE) This helps to ensure that students with additional needs are not at a disadvantage in an examination setting due to learning, physical, emotional or hearing difficulties. Eligible students may qualify for some of the following provisions:

- *A reader*
- *A scribe*
- *Use of recorder*
- *Use of laptop*
- *Use of C - Pen*
- *A separate/shared centre during their Leaving Cert or Junior/Leaving Cert examinations.*



### Student Council

The Student Council has been functioning in Deelee College since 2004. The Council provides a forum for students to express their opinions and enables them to play a partnership role with the staff, Parents' Association and Board of Management. This ensures that the students play a positive role in our school's decision making process. Mr M Gallagher is responsible for liaising between Principal, Staff and Council. The council meet on a regular basis and delegates report to their classes after every meeting.



**Top Row (Left to Right):**

Muireann Mc Bride, Joshua Devine, May Hastings, Ben Harkin, Lucy Peoples, Aine Kelly, Caoimhe Parke, Ella Mc Carron

**Middle Row (Left to Right):**

Riley Doherty, Kate Coll, Adam Cole, Tara Toye (Chairperson), Oisín O'Hara, Laura Friel, Jude Mc Crossan

**Bottom Row (Left to Right):**

Sophie Gallagher, Odhran Feeney, Mia Brown, Dean Hastings, Jade Duffy, Dubhlainn Duddy, Cora Mc Bride

### The Lunchtime Club

The lunchtime club provides an invaluable facility for students who wish to partake in fun activities for twenty minutes during lunchtime. Its relaxed atmosphere enables students to make friends and enjoy some quality down time. The reading club, computer club, arts & crafts club and dancing club prove to be very popular with students of all ages.





## Wellbeing & Health Promoting Schools

### "Staying Well" - The Elements

Being Healthy,  
Physical and Active,  
Being Social,  
Being Safe,  
Being Spiritual,  
Being Confident,  
Being Positive about  
learning,  
Being Responsible,  
Safe and Ethical while  
using technology.

The Wellbeing Committee  
under the direction and  
guidance of Ms Tara Friel run  
numerous Wellbeing  
initiatives throughout the  
year

Here at Deele College we are actively involved in Health & Wellbeing Promotion. Even though Wellbeing has been introduced as part of the new Junior Cycle it stretches far beyond that.

Wellbeing is the centre of many projects within our school and we strive to incorporate the Key skills and Staying Well elements into all we do as a school community.



Mr Boyle and Ms Tara Friel receiving the One Good School Award from Jigsaw representatives. Also pictured are community members and Head and Deputy Head Girls Aine Marie McBride and Tara Toye



"Mental health...is not a destination, but a process. It's about how you drive, not where you're going."



# Extra Curricular Activities at Deelee College



Students in Deelee College participate in a wide range of extra-curricular activities throughout the year. Activities range from many sports to drama, music and dance. The list is endless. Teachers give generously of their time in this wide range of sporting, artistic and cultural activities contributing to the positive teacher-student relationship that is the cornerstone of education in Deelee College.



## Extra Curricular Activities:



Athletics  
Healthy Schools  
Green Schools  
Debating  
Outdoor Education  
Gaeilge 24  
Drama Club



Book Club  
Lunchtime Club  
Choir  
Gaisce Award  
Cross Country  
Fitness Club  
Pop up Gaeltacht  
Photography Club  
Maths Club



Gaelic Football  
Soccer  
Swimming  
Dance & Drama  
Equestrian  
School Tours  
Seachtain na Gaeilge



## Sustainability Working Group

Here at Deelee, we believe that our school plays an important role in sustainable practices. These practices aim to help in the fight against climate change while ensuring that our students are equipped to drive and thrive in a zero-carbon future.

What we have accomplished so far....

- Ms Sinead Hegarty along with her 3D CSPE class analysed many climate issues such as rising sea levels and global warming. These students presented their projects in many different ways with the aim of informing other students about this crisis.
- Bees are vital for the preservation of ecological balance and biodiversity in nature. Our "**DeeleeCollege**" sustainability team and their students planted 1000 bee bombs around our school. This will encourage pollination come spring.
- A huge part of sustainability is down to supporting the local community and sourcing produce responsibly. Deelee college hosted a food fayre showcasing local, Fairtrade and organic dishes for our students to try. The team put a notice board together and displayed it in the GP area. This way recipes and other information are available for our school community.
- Our school takes pride in its natural environment. Many staff and students work in partnership to clear, dispose of and recycle litter around our school on a regular basis. This results in a cleaner more hospitable environment where animals and plant life can flourish.
- Our drive to become more sustainable knows no bounds. A team of teachers were selected to travel to Finland in February, 2022 in order to bring back new sustainable methods of practice for our school community.
- Finally on the run up to COP26 every student in our school took part in the roll out of interactive climate action sessions designed by **#togetherforourplanet**. The aim of these sessions was to get students thinking about climate change and to encourage them to play their part whether that is by recycling, composting, walking to school, using a re-usable water bottle or turning the lights off when leaving a room. Hundreds of our pupils are already actively making a difference, these are influencers of our future.



Sustainability is a journey not a destination. As a school we are eager and willing to reduce our carbon footprint by taking action one step at a time and educating our students so that they too can become leaders of new innovative sustainable practices for the future of our planet.



## Erasmus+ Sustainability Project



Erasmus+ provides funding for educational institutions aided by the European commission through a national agency known as "Leargas". The Erasmus+ project has played a major role throughout the lives of our Deele college community to date. Erasmus provides educators with an opportunity to develop personally, professionally and academically through gaining new transferable skills. This total submergence into other cultures and methods are thought provoking and enriching and complement the working and running of our school.

Seven members of staff will travel to Finland and Cyprus on an Erasmus+ sustainability project in the 2022 (pictured above) - Ms Patrice Gallagher, Ms Lorna Freeborn, Mr Con McFadden, Ms Marilyn O'Riordan (Erasmus+ Co-ordinator), Ms Shauna Scanlon, Mr Kevin McCauley and Ms Patricia Brady.

## ETBI Ethos

### *What is Ethos?*

Ethos is how we live, work and engage with each other in our school community.

Over the past 10 years the Education and Training Board (ETB) sector has engaged in an extensive consultation process exploring the ethos of ETB schools. The ETB ethos is articulated in the ETB Ethos Statement which affirms that ETB schools are state run, co-educational and multid denominational

schools underpinned by the core values of:

***Excellence in Education; Care; Equality; Community and Respect.***

### *As a school, who are we?*

*We are a State School*

*We are a Multi-Denominational School*

*We celebrate all religions and beliefs*

*We are Co-Educational*



*We aim to achieve excellence in our teaching and learning*

*Dignity & rights of all members of the school community are upheld*

*All students, staff & parents play an active role in developing our school community*



*Means providing a supportive environment for ALL*

*Everyone is treated equally on their school journey*

## Making time for others at Deelee College

The 6th Year LCVP class raised €1,750 through their annual football blitz for 1st year classes. They along with their teachers are seen here presenting to two worthy causes, The St Vincent de Paul and Pieta House.



### Annual Christmas Appeal 2021



*Toys and items were collected and distributed to 150 children & their families living in Direct Provision in Donegal.*



*Virtual 5K Fundraising event in support of "Jigsaw" run by the parents associations from both Deelee College and The Royal & Prior*



**Relay For Life**

In the course of each school year, students and staff work together to raise funds for charities such as:

- Jigsaw Mental Health Services
- Relay for Life
- Donegal Hospice
- Christmas Shoe Box Appeal
- St. Vincent de Paul hampers



**Team Hope's Christmas Shoebox Appeal**

Many other worthy causes which arise during the school year are supported where possible. At Deelee College, we are confident that our students make a difference to the world by their spirit of volunteerism - making time for others. This will be invaluable in their adult lives.

## Awards at Deelee College

We aim to provide a broad education and to turn out students, who are not only academically qualified but also good citizens. To motivate students towards the highest possible goals the school has developed an Award System, which recognises student achievement across the full range of student activities. We have recently developed a 1st and 2nd Year Awards programme which allows for teachers to nominate students to receive recognition for a wide variety of tasks during each term.

Awards include academic, sports, music, art, creative writing and special achievements. The aims of the annual awards ceremony are outlined below:

- to encourage students to excel academically and personally
- to recognise significant voluntary, community and charitable activity
- to acknowledge student initiative and effort
- to promote excellence
- to reward and encourage talent
- to foster and reward high achievement
- to create a sense of pride in students





## Where to next.....??

Students who complete the Leaving Certificate in Deele College venture in many different directions. While some have gone directly into the world of work, some others have gone off to learn a trade. Meanwhile a large number have taken up positions in many of the highly acclaimed Institutes of Technology, while some others have taken up positions in universities and colleges away from home. A small number of these are acknowledged below:

**Isaac Stowe,**  
Biomedical Science,  
Trinity College Dublin

**Amy McLaughlin Woodforth,**  
Law (BCL) Criminology and  
Criminal Justice,  
NUI Galway

**Adam Quinn,**  
Wood Technologies,  
Sligo IT

**Maura Sweeney,**  
Bachelor of Business Hons,  
LYIT

**Francis Brennan,**  
Arts,  
NUI Galway

**Rory Craig,**  
Athletic Therapy & Training,  
DCU

**Sean Meehan,**  
Undenominated Engineering,  
NUI Galway

**Ellie Barron,**  
Communications & Media,  
DCU

**Callum Doherty,**  
Adult Nursing,  
University of Ulster Magee

**Nora Anne Clarke,**  
Psychology,  
Queen's University Belfast

**Kelly Chen**  
Actuarial & Financial Studies,  
UCD

**James Boyce,**  
Maths,  
Queen's University Belfast

**Katie Allan,**  
Primary Teaching,  
DCU

**Holly Canning,**  
Nursing,  
University of Ulster Magee

**Dominik Kuzmic,**  
Forensic Computing,  
LYIT

**Conall McDaid,**  
Occupational Health & Safety  
Sligo IT

**Chelsea Dowds,**  
Personalised Medicine,  
University of Ulster

**Anna Friel,**  
Personalised Medicine,  
University of Ulster

**Gerard Mc Kelvey,**  
Fire Safety Engineering,  
LYIT

**Ethan Linley,**  
Law,  
LYIT

**Shannon Mayne,**  
Law,  
LYIT

**Neve Scanlon,**  
Physiotherapy Studies,  
LYIT

**Abbie Coll,**  
Home Economics Teaching  
St. Angela's, Sligo

**Adam O'Leary**  
Veterinary Nursing,  
LYIT

**SOLAS**  
An tArdáil Chláiríochais Leantúcháin agus Scéimhe  
Faoil Éilidh agus Trianúcháin

**Sligo**  
Institiúití Teicneolaíochta

**Coláiste na Tríonóide, Baile Átha Cliath**  
Trinity College Dublin

**QUEEN'S UNIVERSITY BELFAST**

**north west regional college**  
North West Regional College

**National University of Ireland, Galway**

**DUBLIN CITY UNIVERSITY**  
DUBLIN CITY UNIVERSITY

**lyit**  
LYIT

**ST ANGELA'S COLLEGE**

**eth**  
ETH

## Why Choose Deelee College.....?

- *High standards of excellence in both academic and extra curricular fields.*
- *Mixed gender classes, encourages social and personal development.*
- *Each class has its own class tutor whose responsibilities include monitoring the progress and welfare of each student.*
- *The school has a proactive Student Support System who combine with management and staff to create a caring, learning environment for all students. Therefore, we place great emphasis on pastoral care.*
- *Effective book rental scheme.*
- *A very successful induction programme for incoming first year students. This helps Students to adjust to second level education.*
- *Each year group has a designated year head, who plays a leading role with all aspects of their year group.*
- *We provide an opportunity for first year students to experience a whole range of Junior Cycle subjects so that informed subject choices can be made for second year on the basis of experience.*
- *With two full time Career Guidance Counsellors, invaluable advice on subject choice, further education, training and careers is available.*
- *A number of our teachers are highly experienced in the field of marking examinations for the State Examinations Commission - some operate at the level of advising examiner. This expertise is disseminated through the various subject departments and is invaluable in maximising students potential.*



## Teaching Staff

- Caitriona Bonner
- Martina Mc Gill
- Gearoidin Brady
- Patricia Brady
- Mary Crawford
- Fiona Creagh
- Fiona Deeney
- Evin Devenney
- Aisling Ferry
- Patrick Flood
- Eamonn Foy
- Lorna Freeborn
- Fiona Friel
- Tara Friel
- Michael Gallagher
- Orla Gallagher
- Roslyn Kane
- Laurah Stewart
- Cahir Wilhare
- Marisa Simms
- Victoria Kelly
- PJ Gallagher
- Mary Gibbons
- Steven Gibson
- Annette Gildea
- Andrew Gillespie
- Liz Gordon
- Sinead Hegarty
- Fiona Henderson
- Odette Hogg
- Seamus Kelly
- Shauna Kelly
- Helen Logue
- Patrick Mc Ateer
- Orla McCafferty
- Kevin McCauley
- Andrew McFadden
- Con McFadden
- Daniel O'Brien
- Clara Coll
- Clive Monahan
- Pat McGarvey
- Bernadette Mc Gettigan
- Teresa McGinley
- Gerard Mc Glinchey
- Enda McHugh
- Mary Moore
- Gary Murray
- Maureen O'Donnell
- Sarah O'Gara
- Kelvina Mullan
- Marilyn O'Riordan
- Jacqueline Pearson
- Gary Quinn
- Nicola Taggart
- Michelle Uí Raghallaigh
- Suzanna Ward
- Carlyn Maguire
- Shauna Devenney
- Sheena Boyle-Laverty
- Fr. E. Kelly
- Rev. C. Wilson

## Special Needs Assistants

- Sharon Mc Laughlin
- Dermott Cannon
- Patricia Curley
- Dianne Gallagher
- Catriona Gillespie
- Aoife Mailey
- Sharon Mc Brearty
- Lillian Mc Crory
- Lorraine Doherty
- Majella McCosker
- Natalie McFadden
- Natalie McGeever
- Jacqueline Molloy
- Alice Rose O'Hagan
- Finola Quinn
- Paddy Shields
- Kirstie Steele
- Fiona Kelly

## Administration Staff

- Anouska Mulrine
- Fidelma Corry
- Donna Cannon

## Care Taking Staff

- Gerard Crawford
- Tony Connolly
- Michael Mc Connell





**DEELE COLLEGE,  
RAPHOE,  
CO. DONEGAL,  
074 91 45493**

**deelecollege@donegaletb.ie  
www.deelecollege.ie**



**www.deelecollege.ie**



**follow us on social media.....**



**Donegal ETB**